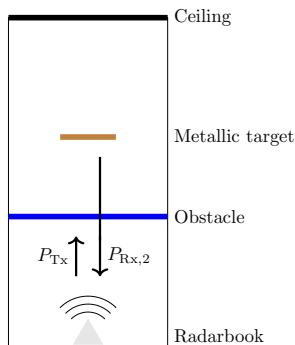
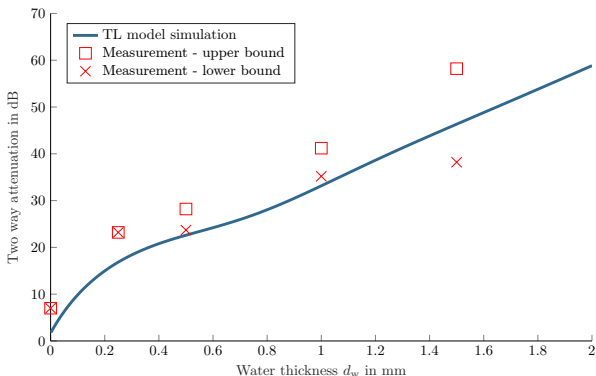


(a) Measurement setup for initial measurement without obstacle.



(b) Measurement setup for following measurements with attenuation and reflection effects due to obstacle.



(c) Two way attenuation of water layers. Solid line shows the theoretical results with interference, reflection, and absorption effects. The cubes represents the upper bound of the executed measurements, the cross the lower bound. The measurement results deviate from the theoretical results due to complex handling of water layer thicknesses.